

## TOOLS OF THE TRADE

Trendsetters give insight on the tools they recommend for treating menopausal skin.



Dermatude Brand Manager USA  
**DEBRA ROSS**

"I absolutely love Dermatude's Stem Cell Reactivator line. These products contain PhytoCellTec™ Argan to provide protection and vitalization of human dermal stem cells for a deep-seated rejuvenation for the client's skin, which restores skin's firmness and reduces wrinkles. This line helps stem cells reproduce new skin cells, keeping the natural skin barrier intact, and protecting the underlying cells, resulting in a strong anti-aging and skin-firming effect. It's ideal for mature skin." [dermatudeusa.com](http://dermatudeusa.com)



Glo Skin Beauty Vice President of Marketing  
**ROBIN OLSON**



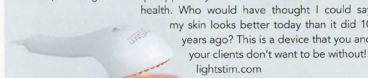
"We get incredible feedback on Phyto-Active Firming Serum by Glo Skin Beauty. This concentrated, light-weight gel melts into skin for immediate uplifting action, in addition to long-term reparative benefits. Clients see results after a single service and rave about how this miracle serum continues to smooth the appearance of wrinkles in the months to follow. This formula combines plant stem cells with other firming, reparative, and antioxidant ingredients for a cascade of actives that lift and tighten while supporting and strengthening skin." [gloskinbeauty.com](http://gloskinbeauty.com)



LightStim President  
**JONIANN MARCHESI**



"I love knowing that whether my skin's challenges are environmental or internal, I can come home at the end of the day to LightStim's LightStim for Wrinkles and circulate oxygen-rich blood, calm inflammation, plump up my skin, and even penetrate my favorite serums, all things that help support my skin's health. Who would have thought I could say my skin looks better today than it did 10 years ago? This is a device that you and your clients don't want to be without!" [lightstim.com](http://lightstim.com)



RapidLash Director of Creative Services  
**CHRISTINE STUTZMAN**



"RapidEye™ Firming Wrinkle Smoother by RapidLash is an age-defying eye cream that instantly hydrates, nourishes, and invigorates delicate skin around the eyes, while delivering long-term firming, smoothing, and uplifting benefits. RapidEye, formulated with Hexatein® 6 Complex, is designed to improve the appearance of fine lines, wrinkles, and crow's feet; tired and fatigued-looking skin; under eye puffiness, and signs of premature aging." [rapidlash.com](http://rapidlash.com)



### Menopausal Skin & Marketing

The Official Publication of Aesthetics International Association



glo  
SKIN  
BEAUTY

## PHYTO-ACTIVE FIRMING SERUM

"This concentrated, light-weight gel melts into skin for immediate uplifting action, in addition to long-term reparative benefits."