

glō·minerals

AS SEEN IN



style.

RUNWAY READY
GET THE LOOK

naomi watts

54 / NEWBEAUTY / Winter-Spring 2016 / newbeauty.com

“

I kept Naomi's makeup polished and feminine to complement her neutral dress.
-MARY WILES

Her Makeup

"To complement Naomi's neutral outfit, I used a berry color on her lips and defined her eyes while keeping the look polished and feminine," says celebrity makeup artist Mary Wiles, who created the look. For a similar lip, try **glō minerals Cream Glaze Crayon in Dahlia**. \$16, glominerals.com

Her Clutch

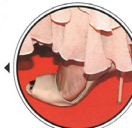
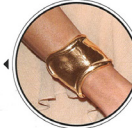
Naomi's structured, boxy Lee Savage "Space Small" clutch with gold accents adds a bit of edge to her flirty, ruffled Balmain Resort 2016 Frounced Top and Skirt. Clutch: \$2,430, [Balmain.com](http://balmain.com); Top: \$4,600, barneys.com; Skirt: \$10,000, balmain.com

Her Bracelets

"The ruffles are dramatic on their own, so simple Tiffany & Co. Elsa Peretti Bone Cuffs in 18k gold accessorize the look well," says Wikus. "Diamonds or colored jewels would have been too much. Less is more with this look." \$11,000 each, tiffany.com

Her Heels

Wikus says this monochromatic look works well on Naomi. "Her skirt and **Giuseppe Rose Nude Patent Sandals** almost match her skin color, but don't wash her out," she adds. "Her dark toenail polish adds contrast, too." \$956, net-a-porter.com



➤ FIND MORE SHOP-ABLE LOOKS ON NEWBEAUTY.COM

Cream Glaze Crayon »

"To compliment Naomi's neutral outfit, I used a berry color on her lips and defined her eyes while keeping the look polished and feminine."



NEWBEAUTY: JAMES SPILL; NAOMI WATTS: MICHAEL LEVINE/GETTY IMAGES (3)